
Introducing JoDLA and DLA2021

The core of the contributions in your hands are driven by a double-blind review process. Forty-two papers were selected from the original sixty-three submitted extended abstracts during the two-phase process. We also invited two current reports to give you a wider view on the many issues on BIM.

We are very proud to also be able to publish the two outstanding keynote lectures that were given by Prof. Dr. Carl Steinitz at the Digital Landscape Architecture Conference in 2019 in Dessau and in 2020 in Boston. The text on “From (Before) Analog to (After) Digital: A Personal Perspective” gives an introduction to the analog history of the systematics in landscape architecture which was waiting to meet the first computer at the Graduate Design School in Harvard in 1964. This perspective of Carl Steinitz also tells a great deal about the story of American Landscape Architecture. Carl Steinitz then describes the transformation from “analog to digital methods”, which he sees mainly as transformation of older ideas to digital tools.

The second keynote of Carl Steinitz, which Brian Orland co-authors, focuses on the future of landscape architecture education and practice. As digital landscape architecture enables more varied and appropriate design methods for these challenges, Carl Steinitz urges that the challenge of more collaborative engagement in design for larger, more serious global challenges should be taken. In his final statement, he gives four clear possibilities for the future of digital landscape architecture, within the profession and as an academic field, and not all are digital!

After these essays on defining Digital Landscape Architecture, the Journal offers you a wide range of current research and practice in digital landscape architecture. Please find the reviewed essays on

- Resilient Landscape, Global Change and Hazard Response
- Visualization, Animation and Mixed Reality Landscapes (VR, AR)
- UAV Imagery and Remote Sensing in Landscape Architecture
- Geodesign Approaches, Technologies, and Case Studies
- Landscape and Building Information Modeling (LIM + BIM)
- Digital Landscape Architecture in Practice
- Algorithmic Design and Analysis Landscapes
- Teaching Digital Landscape Architecture

As already mentioned, we have invited two contributions on BIM to this issue. You will find the thank you to the reviewers and more details on this year’s review process in the closing chapter Acknowledgements.

Besides publishing in this peer-reviewed publication, the exchange with many others working in the same area is essential to the idea of DLA. All authors who manage to master the strict review process for JoDLA are invited to present their papers at the DLA Conference. The outreach to the first all virtual DLA 2020 in Boston with 1000 registrations and up to 400 signed in at any given time was clearly much larger than the years before.

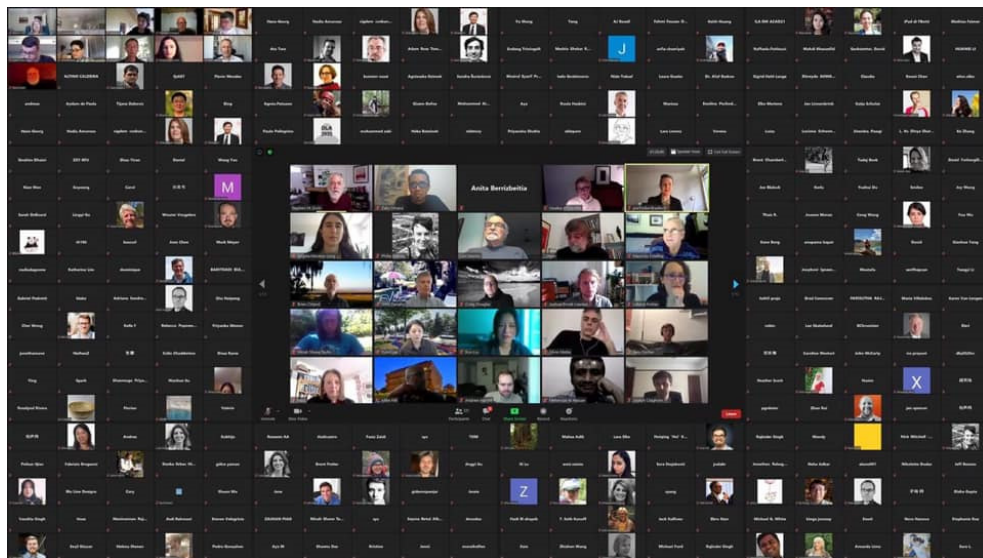
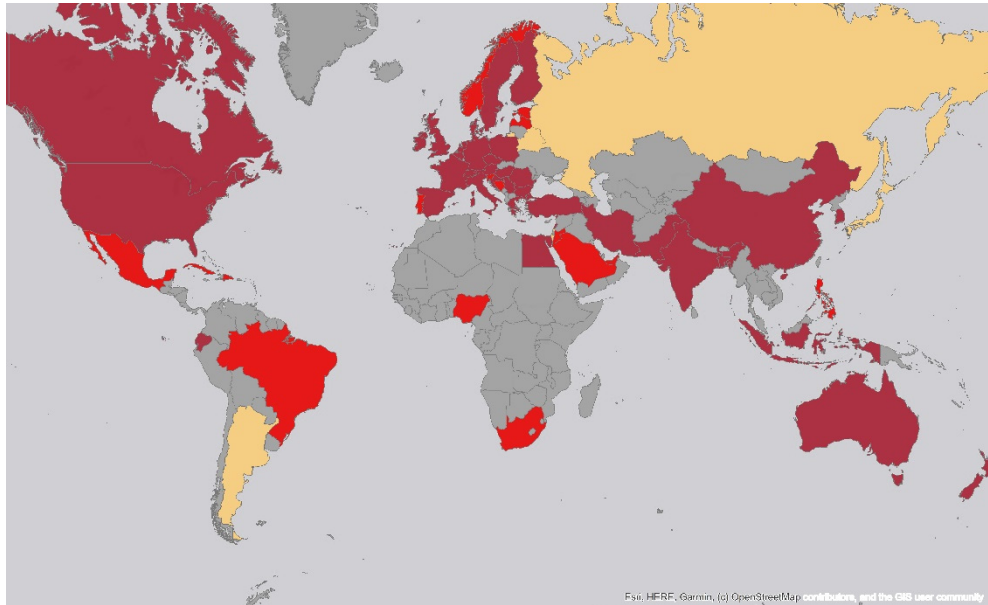


Fig. 1: The virtual DLA Family 2020 – screen dump by Stephen Ervin

We have learned that future DLA Conferences will include a virtual component in order to reach out to colleagues and students not able or willing to travel long distances. The participants of DLA 2020 came from 56 countries. Dark red indicates regular participation in previous years, bright red first-time participation. While the virtual conference surely contributed to the relatively high number of 17 new countries because visa restrictions and travel costs were not factors, due to current circumstances five earlier participants (indicated in yellow) were not able to participate this year: Belarus, Russia, Malta, Argentina, Israel. The DLA has now reached out to 61 countries, or to about a third of the world's nations.

The virtual communication tools will help us to continue to reach out to all who are working in the industry, in universities and in practice to further develop our digital tools. How can we use the digital twin in order to manage our resource landscape in a resilient matter?

After the outstanding first all-virtual DLA Conference in Harvard in June 2020, we had been preparing a hybrid version of the DLA at the spacious conference facilities of the UBA headquarter, the German Environmental Agency in Dessau to be held in May 2021. In March of 2021, we had to change our plans as hardly any of our 80 speakers had been vaccinated at the time. Because the current infection rate in Germany is critical, we reduced the “hybrid” to around ten colleagues moderating live in order to have the best possible communication between speakers and participants.



Australia	Dominican Rep.	Italy	Saudi Arabia
Austria	Ecuador	Jordan	Serbia
Bahrain	Egypt	Latvia	Singapore
Bangladesh	Estonia	Lebanon	Slovenia
Belgium	Finland	Mexico	South Africa
Bosnia and Herzegovina	France	New Zealand	South Korea
Brazil	Germany	Nigeria	Spain
Bulgaria	Greece	Norway	Sweden
Canada	Hong Kong	Pakistan	Switzerland
China	Hungary	Philippines	The Netherlands
Croatia	India	Poland	Turkey
Cuba	Indonesia	Portugal	United Arab Emirates
Czech Republic	Iran	Republic of Korea	United Kingdom
Denmark	Ireland	Romania	USA

Fig. 2: World map of DLA 2020 registrant's countries in red, first time participants in bright red and previous participants who did not attend in 2020 in yellow (graphic by Nas-taran Tebyanian)

We would like to thank all who are contributing to our attempt to strengthen the impact of landscape architecture in order to strengthen the use of digital methods and tools. You are invited to reach out to all colleagues worldwide to network on the benefits of digital landscape architecture to a more resilient future.

The documentation of the past and future DLA conferences is found at <http://dla-conference.com>.